

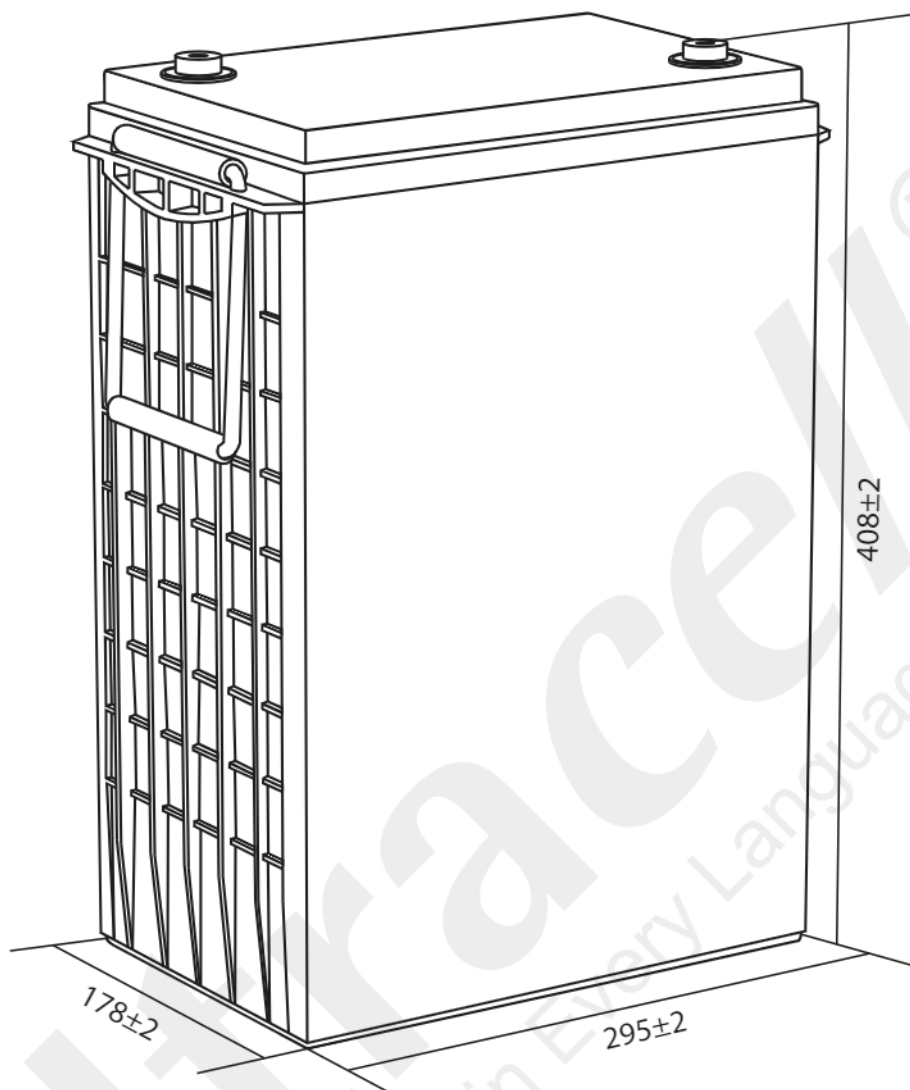
Ultracell®

'Quality in Every Language'

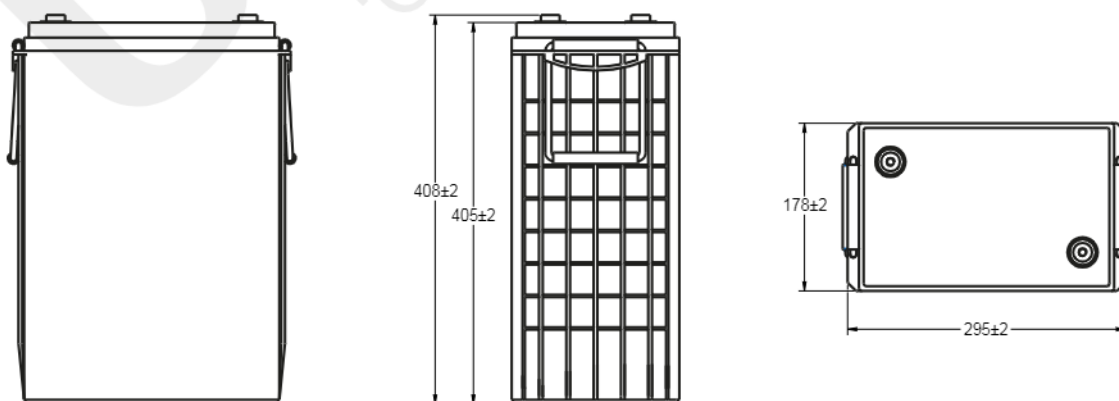
UZV600-6

6V 600Ah (C₁₂₀)

Flat Gel Series



Technical Dimensions (mm)

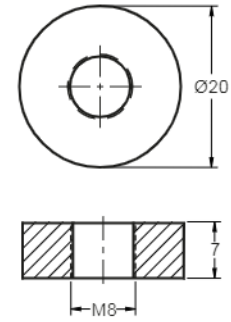


Image



Terminal Dimensions (mm)

Standard Terminal: F11



Technical Specification

| | | |
|-------------------------------------|----------------------------------|---|
| Output | Nominal Voltage | 6V |
| | Nominal Capacity (120HR) | 600Ah |
| Terminal Type | Standard Terminal | F11 |
| Container Material | Standard Option | ABS |
| | Flame Retardant Option (FR) | ABS (UL94:VO) |
| Rated Capacity | (120HR 1.60V/cell, 25°C) | 600 Ah/5.0A |
| | (20HR 1.75V/cell, 25°C) | 495 Ah/24.75A |
| | (5HR 1.70V/cell, 25°C) | 371 Ah/74.2A |
| | (1HR 1.60V/cell, 25°C) | 224 Ah/224.0A |
| Max Discharge Current | 1450A (5s) | |
| Internal Resistance | Approx 3.8mΩ | |
| Discharge Characteristics | Operating Temp Range | Discharge: -15 ~ 50°C Charge: -10 ~ 50°C Storage: -20 ~ 50°C |
| | Nominal Operating Temp Range | 25 ± 3°C |
| | Cycle Use | Initial Charging Current less than 80A. Voltage 7.05V ~ 7.2V @ 25°C Temp. Coefficient -30mV/°C |
| | Standby Use | No limit on initial charging current. Voltage 6.75V ~ 6.9V @ 25°C Temp. Coefficient -18mV/°C |
| | Capacity affected by Temperature | 40°C 102% 25°C 100% 0°C 85% |
| Design Floating Life at 20°C | 20 Years | |

Self Discharge

Ultracell® UZV batteries may be stored for up to 6 months at 25°C and then a refresh charge is required. For higher temperatures the time intervals will be shorter.

Constant Current Discharge / Constant Power Discharge At 25°C (Amperes & Watts/Cell)

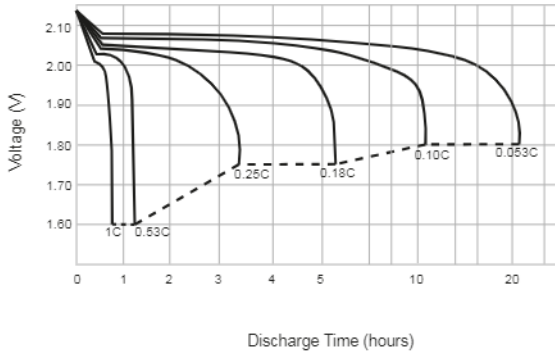
A = Amperes W = Watts

| F.V/TIME | 15 min | 30 min | 60 min | 2 hours | 3 hours | 5 hours | 8 hours | 10 hours | 20 hours | 24 hours | 48 hours | 72 hours | 100 hours | 120 hours |
|------------|--------|--------|--------|---------|---------|---------|---------|----------|----------|----------|----------|----------|-----------|-----------|
| A | W | min | min | min | hours | hours | hours | hours | hours | hours | hours | hours | hours | hours |
| 1.80V/cell | 392 | 313 | 204 | 137 | 102 | 73.9 | 47.1 | 40.0 | 24.6 | 19.1 | 9.94 | 6.99 | 5.11 | 5.00 |
| | 2152 | 1755 | 1165 | 793 | 597 | 431 | 280 | 231 | 119 | 108 | 61.9 | 42.1 | 30.4 | 29.8 |
| 1.75V/cell | 414 | 320 | 208 | 140 | 103 | 74.2 | 48.5 | 40.3 | 24.75 | 19.4 | 10.2 | 7.04 | 5.14 | 5.05 |
| | 2272 | 1822 | 1202 | 813 | 615 | 444 | 288 | 236 | 122 | 110 | 62.3 | 42.6 | 31.0 | 30.1 |
| 1.70V/cell | 428 | 332 | 215 | 143 | 105 | 75.6 | 48.9 | 40.6 | 25.1 | 19.5 | 10.4 | 7.07 | 5.17 | 5.09 |
| | 2352 | 1867 | 1226 | 826 | 620 | 447 | 290 | 240 | 126 | 113 | 62.7 | 43.0 | 31.6 | 30.5 |
| 1.65V/cell | 445 | 343 | 221 | 144 | 106 | 76.2 | 49.2 | 40.9 | 25.3 | 19.7 | 10.8 | 7.11 | 5.19 | 5.12 |
| | 2442 | 1926 | 1258 | 833 | 624 | 450 | 292 | 245 | 129 | 117 | 62.9 | 43.4 | 32.2 | 31.3 |
| 1.60V/cell | 456 | 350 | 224 | 145 | 107 | 76.8 | 49.5 | 41.1 | 25.5 | 19.9 | 11.2 | 7.15 | 5.21 | 5.15 |
| | 2502 | 1965 | 1277 | 838 | 628 | 453 | 294 | 248 | 132 | 121 | 63.1 | 43.8 | 32.8 | 31.8 |

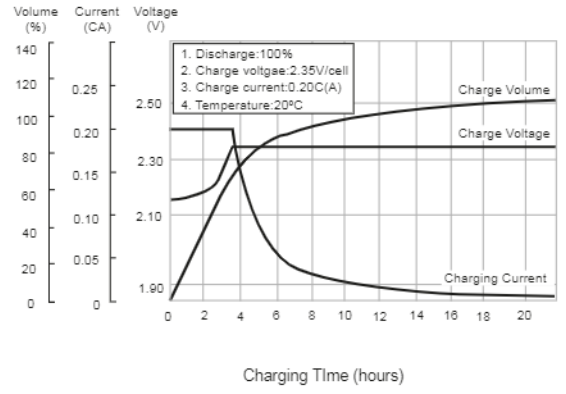




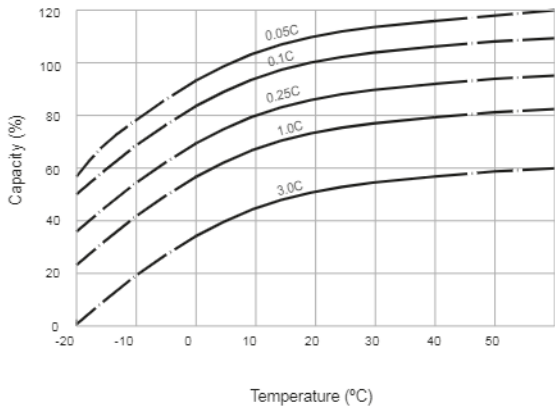
Discharge Characteristics



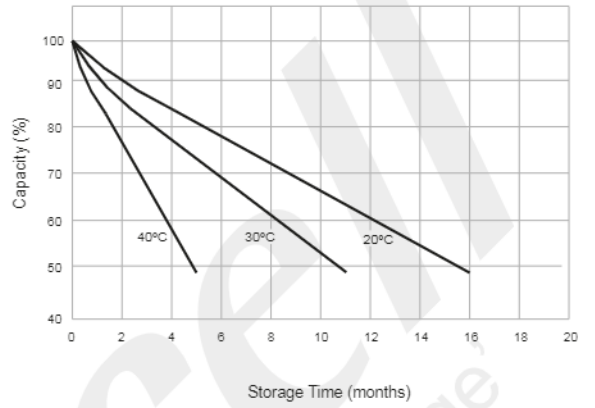
Charging Characteristics



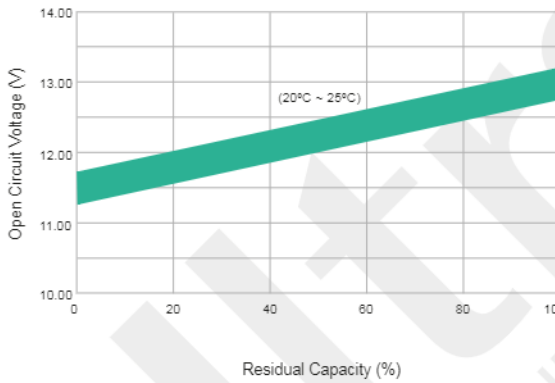
Temperature Effects in Relation to Battery Capacity



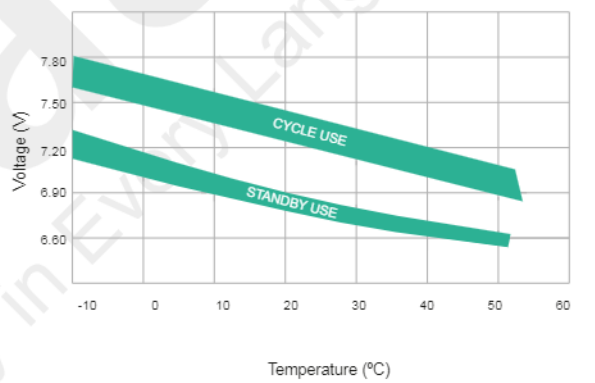
Self-Discharge Characteristics



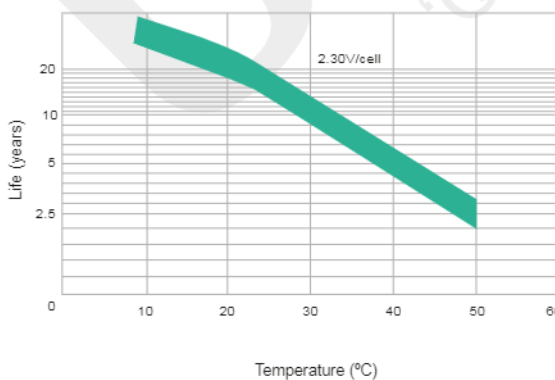
Open Circuit Voltage And Residual Capacity (25°C)



Charging Voltage and Temperature



Floating Life on Temperature



Cycle Life on D.O.D (25°C)

